

## Outstanding facilities



Our commitment to academic excellence is backed by the highest quality facilities and equipment, with over £150 million invested in the last few years to further develop and improve our campuses.

"From all the excellent new study facilities at the University I especially like the Hive - a fantastic big library where you can find all the books that you need. It's very modern and high-tech."

*Zhana Yovcheva*  
International student

### Specialised facilities

Our three campuses are closely linked by footpaths and cycle routes and offer exceptional learning environments- all within a 20 minute walk from each other. From the contemporary science labs and incredible sports facilities at the recently refurbished St John's and Riverside campuses, to our business school in the modernised Georgian buildings of City Campus, we have a number of specialised facilities that are central to your learning.

Nursing students benefit from our cutting-edge **simulation facility** and **clinical skills suite**, enabling them to practice in safe environments and gain the confidence and competence needed before embarking on a career within the health service.

For those seeking careers within the arts, **The Garage**, a renovated industrial building near St John's campus, offers inspiring studios, workshop spaces and all the necessary equipment for practising fine art, illustration, and ceramics.

With a reputation for sporting excellence, our sports students have a wide range of specialist amenities to aid their studies. From the **2,000 seat University of Worcester Arena** and **fitness suites to human performance labs** and **floodlit astroturf pitches**, our sports facilities cater for the needs of both able-bodied and disabled athletes.

"The facilities at the University are really good, especially the clinical rooms where students can attend training simulations to build on skills and experience scenarios before going out into practice, preparing for the real ward experience."

*Christopher McClelland*  
Adult Nursing BSc (Hons) student

### Learning spaces and IT facilities

Group study and learning spaces are located throughout our campuses, providing an excellent environment for you to study. These flexible areas include computer labs, wired and wi-fi internet access, and e-learning applications. Open access computers are also available in other campus areas such as the library and the popular Peirson Study and Guidance Centre.



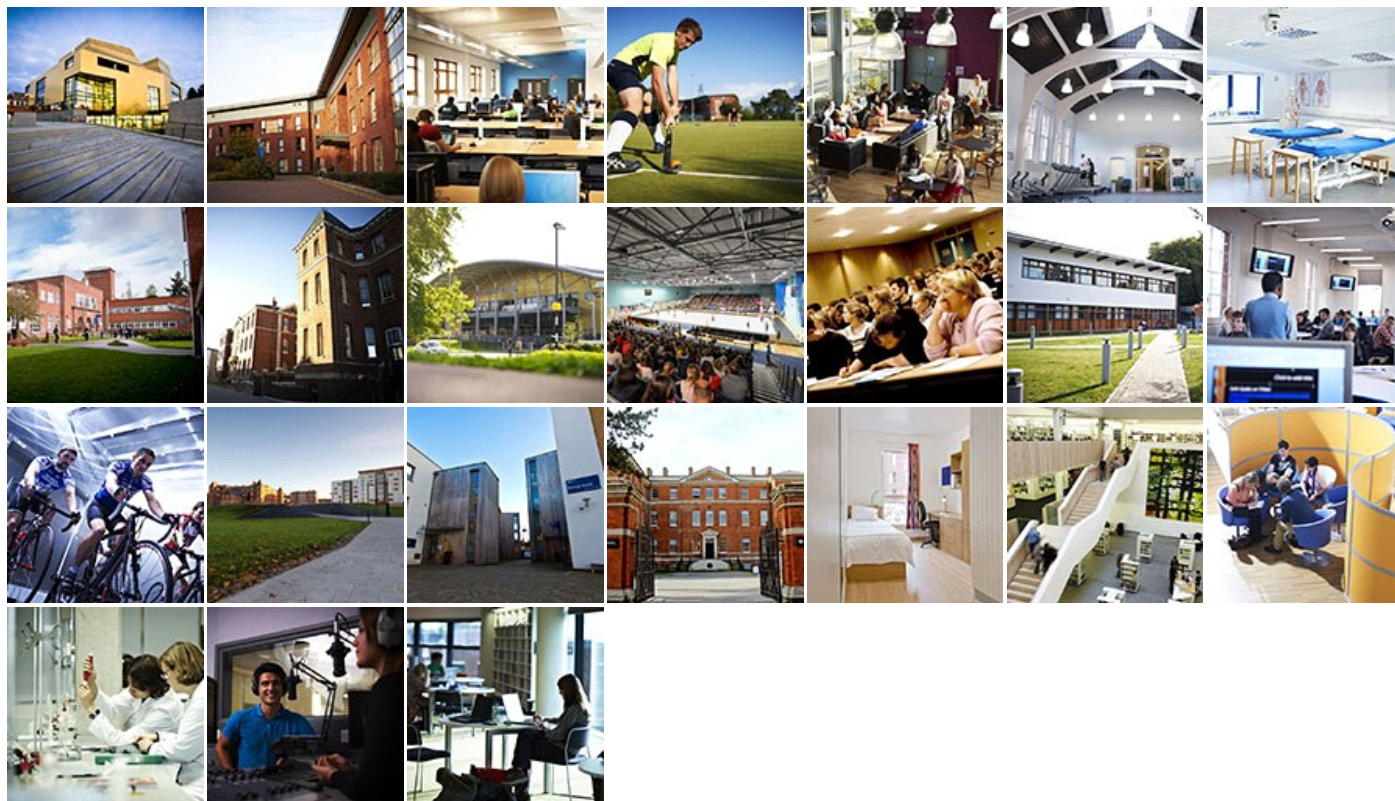
### In the spotlight

#### The Hive

A ground-breaking joint venture between the University and Worcester City Council, the Hive is a multi-million pound library and the first of its kind in Europe. Opened in 2012, the beautifully designed centre is home to a quarter of a million books and 12 miles of archive collections, as well as a number of educational and cultural spaces to support its busy events programme. With over 48 awards to its name, The Hive is now the most celebrated university library in the country, with accolades for its innovative services,



## Explore our facilities



© University of Worcester Henwick Grove, WR2 6AJ Tel: 01905 855000 - Last reviewed: Tuesday, 12 December 2017

Page can be found:

[Home](#) / [Make yourself at home](#) / [Explore your new home](#) / Outstanding facilities

<http://www.worcester.ac.uk/your-home/outstanding-facilities.html>